



How to Transport Your Countertop

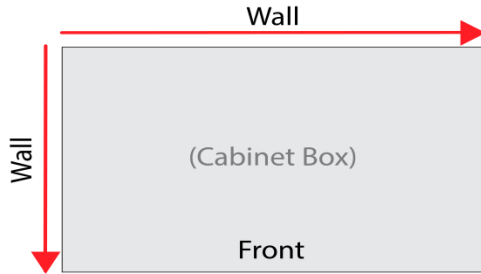
To ensure you do not damage your countertop when transporting it from our store to your home, we recommend the following:

- Empty out your vehicle before coming to pick up your piece, this ensures there is enough room and reduces the chances of damage.
- Bring straps or large C-clamps to help secure the piece.
- Countertops cannot be laid flat. They need to be transported upright to prevent breaking. We recommend leaning it against a seat back or a solid, upright surface strapped down in your vehicle.
- Pieces should be clamped down with c-clamps or strapped down with straps to avoid bouncing which can damage your piece.
- When lifting, moving, or carrying, your piece should always be held upright or at a slight angle to prevent damage.

How to Measure for a Countertop

Proper measurements help ensure a smooth process and good fit. We ask that you follow these instructions when measuring for a countertop:

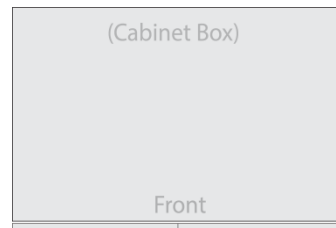
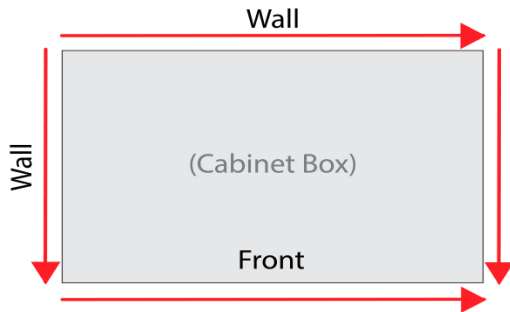
- Measure along each wall (if applicable).



Draw here:

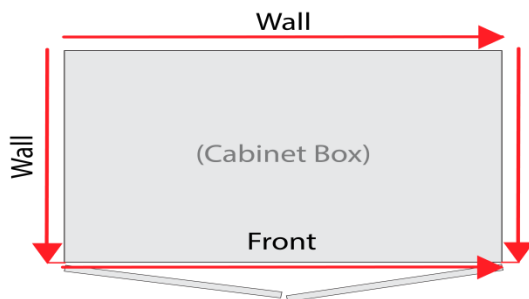


- Measure the edges of the cabinet box.



- Typically there is a 2" overhang from the front of the cabinet box (not the face of the door or drawer) and 1 ¼" overhand from the cabinet box on the sides without doors or drawers. Add this to your measurements or let us know if you have not.

Notes:

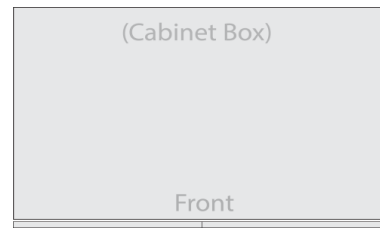
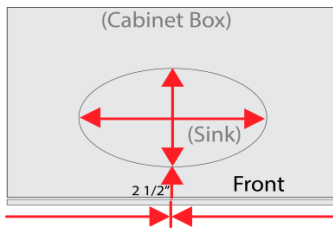


Measuring for Sinks

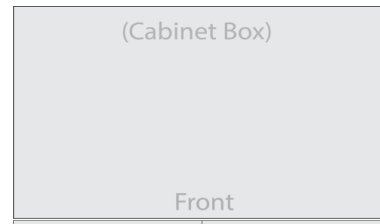
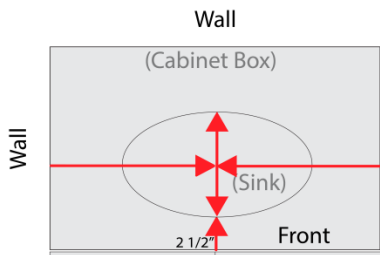
To assist in ensuring that counters are cut properly for sinks, we ask that you provide the sink's model number and manufacturer. We will follow the manufacturer's standards when cutting the sink. If we cannot find the manufacturer's standards we may request the sink be brought in.

- We set sinks back 4 ½" from the front of the countertop, which is 2 ½" from the front of the cabinet box. This is a measurement we will make with the manufacturer's standards
- We need a sink center. There are multiple ways you can measure this:
 - a. The sink center is typically the center of the double doors on the front of the cabinet directly under the sink

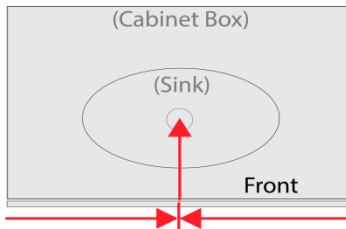
Draw here:



- b. Measure off a wall towards the sink center.



- **Vessel Sinks** require different measurements. To measure a vessel sink, you need to measure the distance from the front edge of the cabinet box to the center of drain.



How to Install Countertops

There are some considerations that need to be made when installing countertops yourself.

- Countertops should always be carried upright (not flat like they would lie when installed).
- When installing them on a cabinet box you should set the piece on its edge and **slowly** lay it down against the wall until it is laid flat. You will likely have to pull it out slightly in the front to have it the right distance from the wall.

